

Sunday of the Expulsion of Adam from Paradise

The last of the preparatory Sundays has two themes: it commemorates Adam's expulsion from Paradise, and it is also the Sunday of Forgiveness. There are obvious reasons why these two things should be brought to our attention as we stand on the threshold of the Great Fast. One of the primary images in the Triodion is that of the return to Paradise. Lent is a time when we weep with Adam and Eve before the closed gate of Eden, repenting with them for the sins that have deprived us of our free communion with God. But Lent is also a time when we are preparing to celebrate the saving event of Christ's death and rising, which has reopened Paradise to us once more (Luke 23:43). So sorrow for our exile in sin is tempered by hope of our re-entry into Paradise. Throughout the Triodion, the events of sacred history are not treated as happenings in the distant past or future, but as experiences undergone by me here and now within the dimension of sacred time. The second theme, is that of forgiveness. Before we enter the Lenten fast, we are reminded that there can be no true fast, no genuine repentance, no reconciliation with God, unless we are at the same time reconciled with one another. A fast without mutual love is the fast of demons. As the commemoration of the ascetic saints on the previous Saturday has just made clear to us, we do not travel the road of Lent as isolated individuals but as members of a family. Our asceticism and fasting should not separate us from our fellow men but link us to them with ever stronger bonds. The Lenten ascetic is called to be a man for others.

St. Herman of Alaska Orthodox Church

Orthodox Church in America, Diocese of the West

1407 30th Street, Port Townsend, WA 98368

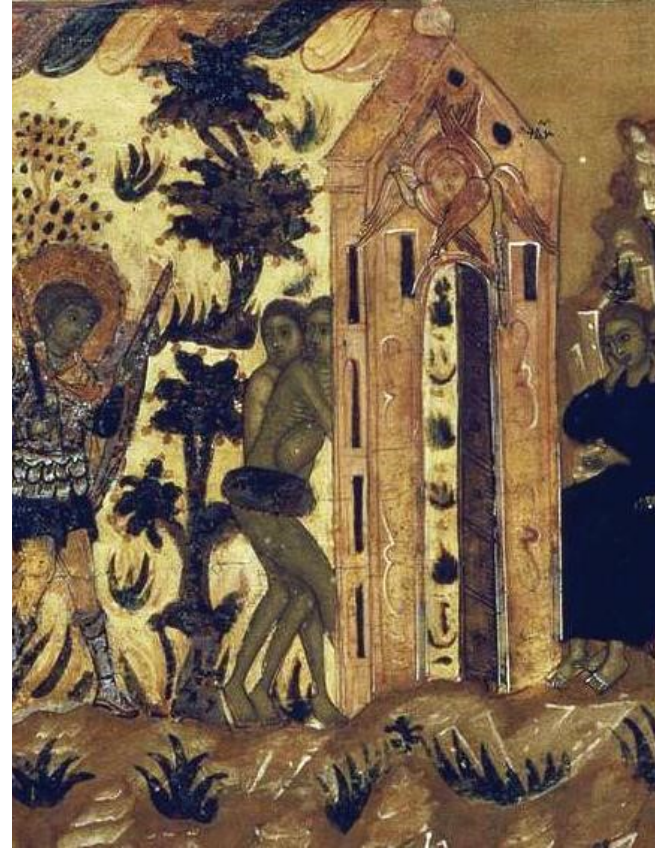
Archpriest Nicholas Kime, Rector

360-385-0585

www.OrthodoxPortTownsend.com

St. Herman of Alaska Orthodox Church

Port Townsend, WA



Sunday, March 10th, 2019

Cheesefare Sunday; Expulsion of Adam from Paradise

41st Sunday after Pentecost

